

User Manual

500555-WH



Table of Contents

| | |
|---------------------------------------|---|
| 1. Safety Precautions..... | 3 |
| 2. Introduction..... | 4 |
| 3. Features..... | 4 |
| 4. Package Contents..... | 4 |
| 5. Specifications..... | 5 |
| 6. Product Overview..... | 5 |
| 7. Operation..... | 6 |
| 7.1. Power On..... | 6 |
| 7.2. Pairing and Connect..... | 6 |
| 7.3. Routing Configuration..... | 6 |
| 7.4. Bluetooth Name Modification..... | 7 |
| 8. Application Diagram..... | 8 |

1. Safety Precautions

To ensure the best performance from the product, please read all instructions carefully before using the device. Save this manual for future reference.

- Follow basic safety precautions to reduce the risk of fire, electrical shock, and injury.
- Do not dismantle the housing or modify the module. It may result in electrical shock or burns.
- Do not open or remove the housing of the device as you may be exposed to dangerous voltage or other hazards.
- To prevent fire or shock hazard, do not expose the unit to rain, moisture and do not install this product near water. Keep the product away from liquids.
- Spillage into the housing may result in fire, electrical shock, or equipment damage. If an object or liquid falls or spills on the housing, unplug the module immediately.
- Do not use liquid or aerosol cleaners to clean this unit. Always unplug the power to the device before cleaning.
- Using supplies or parts not meeting the product specifications may cause damage, deterioration or malfunction.
- Refer all servicing to qualified service personnel.
- Install the device in a place with adequate ventilation to avoid damage caused by overheat.
- Unplug the power when left unused for a long period of time.
- Information on disposal of devices: do not burn or mix with general household waste, please treat them as normal electrical waste.

Copyright Notice

All contents in this manual are copyrighted, and cannot be cloned, copied, or translated without the express permission of MuxLab Inc. Product specifications and information in this document are for reference only, and the content may be updated from time to time without prior notice.

2. Introduction

The Bluetooth & Analog Audio to Dante Interface, White (Model 500555-WH) is a two-way audio transmission panel for Bluetooth, Analog Audio and Dante. It connects to mobile phones, iPad, and other devices through Bluetooth interface or to analog audio sources, and converts the received audio signal into digital signal transmission through Dante network. Power, control, and audio data are transmitted by only one network cable, and there is no need to worry about ground loops or other audio issues. The Bluetooth Audio to Dante Interface is designed to be compatible with standard dual gang US wall boxes with Decora faceplates.

3. Features

- Simple and intuitive Bluetooth pairing
- Bluetooth 5.0 for longer range and more stable connections
- Compatible with most Apple smartphones, iPads and Android tablets
- RCA and 3.5mm TRS stereo inputs
- 3.5mm TRS stereo output
- Power supply and audio transmission integrated in one cable
- designed to be compatible with standard dual gang US wall boxes with Decora faceplates.
- Shows the connection status through LED indicator light.
- Supports PoE (IEEE802.3af)
- Supports AES67 RTP audio transport

4. Package Contents

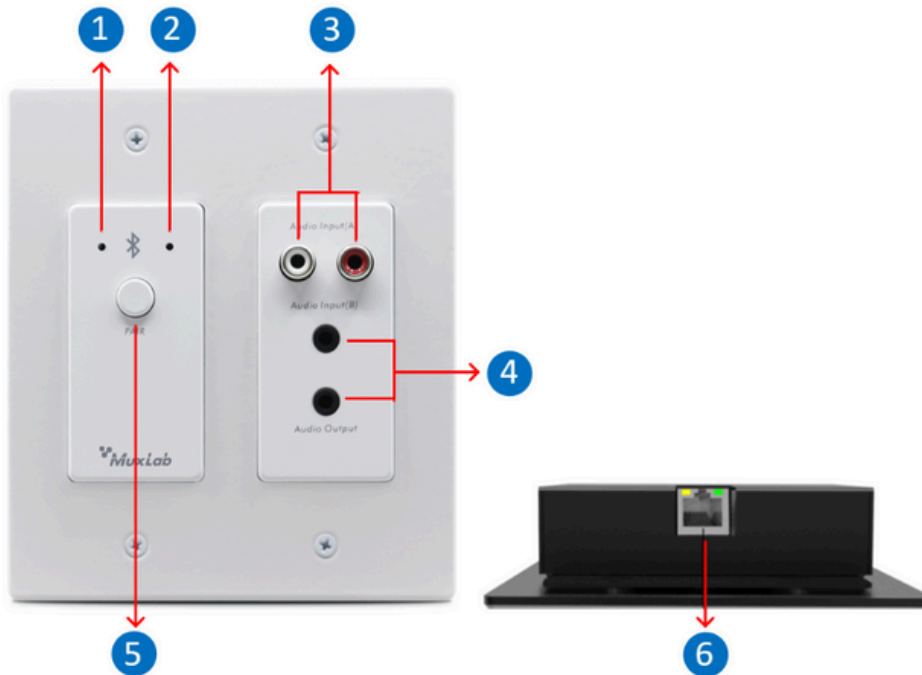
- One (1) Bluetooth & Analog Audio to Dante Interface
- One (1) User manual (available via download)

Notes: Confirm that the product and accessories are all included. If not, please contact the supplier from which you purchased the unit.

5. Specifications

| Specification | |
|-----------------------|--|
| Input Interface | Bluetooth 5.0, stereo RCA X 2 3.5mm TRS X 1 |
| Output Interface | Bluetooth 5.0, stereo 3.5mm TRS X 1 |
| Dante Interface | RJ45 interface, stereo input/output |
| Frequency response | 20Hz-20kHz |
| S/N Ratio | >100dB |
| Floor noise | -90dB |
| Power consumption | 2W |
| THD | <0.005% |
| Form Factor | Dual Gang US |
| Operating temperature | 0°C ~ +40°C |
| Operating humidity | 5~95% |
| Dimensions (LxWxH) | 123.5mm × 109.1mm × 30mm |
| Net Weight | 310g |
| Warranty | 2 years |
| Order Information | 500555-WH Bluetooth & Analog Audio to Dante Interface, White (UPC: 627699015551) |

6. Product Overview



- ①: Red indicator: Power/Bluetooth disconnected
- ②: Blue indicator: Bluetooth connection is successful
- ③: RCA stereo input interface
- ④: 3.5mm TRS input interface / 3.5mm TRS output interface
- ⑤: Bluetooth pairing button
- ⑥: RJ45 Network Interface

7. Operation

- ① Connect the equipment correctly.
- ② Long press the PAIR button on the panel for about 3S, the red and blue LED indicator lights start to flash alternately, it means that it is visible to other devices and can receive pairing
- ③ Use Dante Controller software to control DANTE audio routing:
 - Channels 1 and 2 route stereo Bluetooth audio directly to the Dante network.
 - Channels 3 and 4 can route analog signal RCA input or 3.5mm TRS input to the Dante network
 - The Dante digital signal input can be converted into analog signal through the 3.5mm TRS output interface.

7.1 Power On

After starting the Bluetooth & Analog Audio to Dante Interface, the red and blue LED indicator on the panel will flash alternately for a short time, after successfully power on, it will turn into red light flash.

If the LED indicator light is not on or always on, the equipment will fail. It is recommended to power off and restart the equipment again.

7.2 Pairing and Connect

To enable the pairing mode, the user only needs to press and hold the PAIR button on the panel for about 3S.

The LED red and blue indicators on the panel will start to flash alternately, indicating that the Bluetooth & Analog Audio to Dante Interface is now visible to other Bluetooth devices and accepts pairing. Then you can turn on other Bluetooth devices to search the Bluetooth & Analog Audio to Dante Interface and pair them. When only the blue LED indicator flashes on the panel, it means the pairing is successful.

Note: The device saves the last 10 paired devices in a list, any device present in this list will be able to reconnect without requesting pairing again. The user only needs to select the name corresponding to the Bluetooth Audio to Dante Interface on the smart device.

7.3 Routing Configuration

After the above steps are completed, users only need to open the Dante Controller control software on their PC and configure the audio route to complete the system construction.

Download and install the Dante Controller from Audinate website (www.audinate.com).

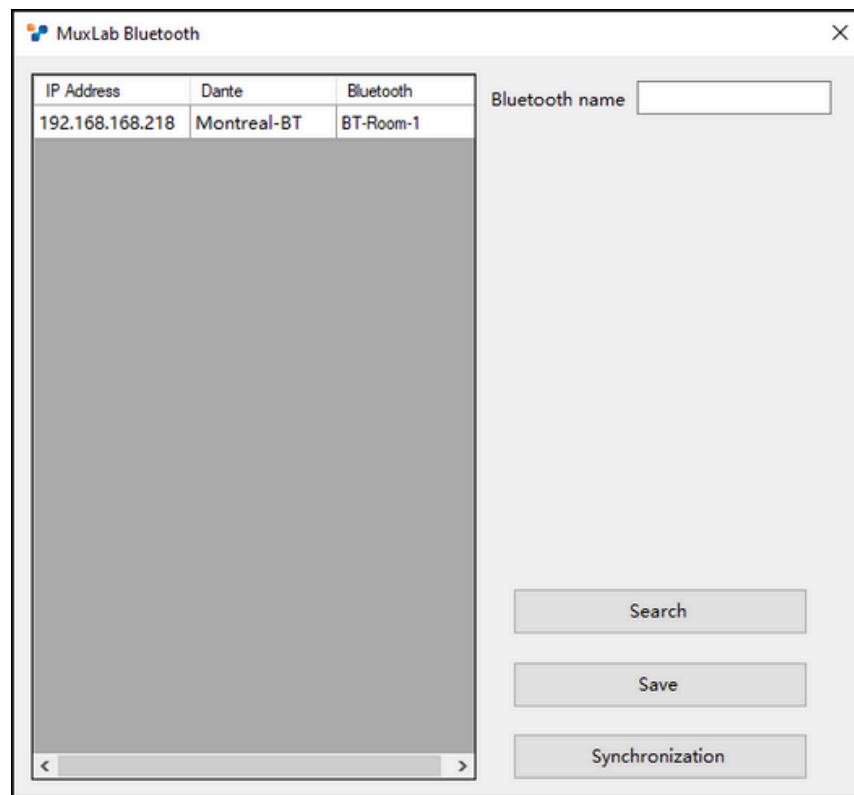
7.4 Bluetooth Name Modification

In order to change the Bluetooth name of the device, download the MuxLab Bluetooth tool from the Muxlab website.

Bluetooth name: Customer customized Bluetooth name

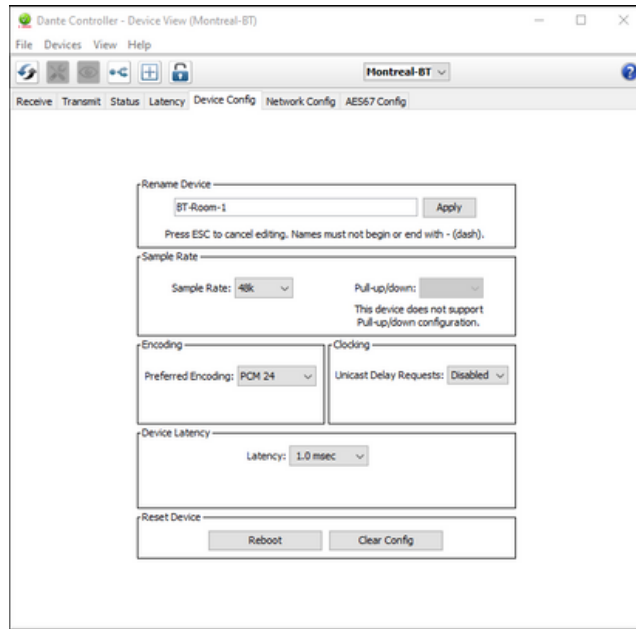
Search: Display the IP address, Dante name, Bluetooth name of online devices

Name synchronization: Bluetooth name is consistent with Dante name



Steps:

1. Click search, the online device will be displayed in the list box, click to select the device
2. Modify the Bluetooth name and click save
3. The Bluetooth name can be modified using Dante Controller software to modify the Dante chip name and the Bluetooth name can be modified simultaneously.



8. Application Diagram

