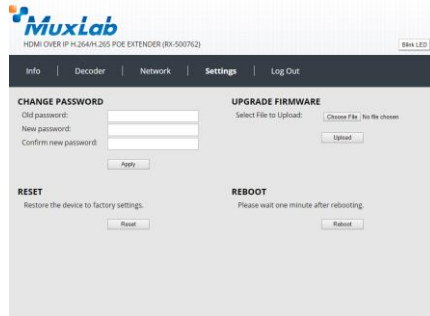


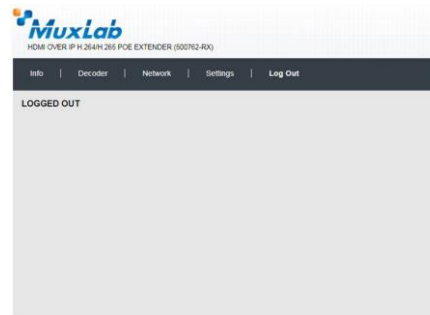
Settings Tab

Click on the “Settings” tab to (a) change the login password, by entering the old password, new password, and reconfirming the new password, and clicking on “Apply”, (b) upgrade the device firmware, by clicking on the “Choose File” button to search for and select the new firmware, and then clicking “Upload”, (c) reset the unit to factory defaults, by clicking on the “Reset” button, and (d) reboot the unit, by clicking on the “Reboot” button.



Log Out Tab

Click on the “Log Out” tab to log out of the device web interface.



500763-TX Web Interface Guide

Overview

The 500763-TX HDMI over IP H.264/H.265 PoE Transmitter, 4K/30 may be setup by the 500811 ProDigital Network Controller or by the 500763-TX Web Interface. This document covers how to setup and manage the 500763-TX via the device’s web interface. To manage the 500763 via the 500811 ProDigital Network Controller, please reference the 500811 Manual. Note that the 500763-TX is compatible with the MuxLab 500762-RX HDMI over IP H.264/H.265 PoE Receiver.

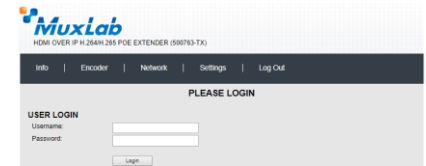
Access to the 500763-TX web interface is possible via a web browser. The unit comes by default with DHCP enabled. Identify the IP address of the 500763-TX device you want to manage by using network utility software tools such as Bonjour, or similar. Set your PC to a different IP address in the same segment, and set the PC subnet mask and gateway address accordingly. Contact a network administrator if assistance is required on how to accomplish this. Enter the 500763-TX device IP address in your browser and press Enter. The first screen presented is the Login screen.

1) 500763-TX

There are several screens to navigate in order to manage the 500763-TX. Note that several 500763-TX screens allow the user to click on a “Blink LED” button to cause the 500762-RX “Link” LED to blink for testing and tracing purposes. The “Blink LED” button operates as a toggle.

Login

To login to the 500763-TX web interface, type in the Username and Password, and then click on “Login”. The default Username and Password are “admin”.



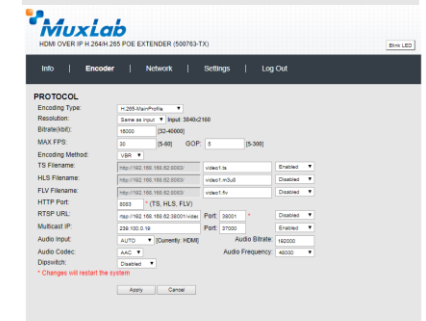
Info Tab

Click on the “Info” tab to get information on the 500763-TX, such as the (a) CPU usage, (b) memory usage vs total memory, (c) input video resolution, (d) input FPS - frames per second, (e) security check (f) GOP - Group of Pictures, (g) encoding type, (h) output video resolution, (i) output frames per second, (j) output bitrate, and (k) URL addresses for the supported communication protocols, including TS, HLS, FLV, RTMP, RTSP, and Multicast.



Encoder Tab

Click on the “Encoder” tab to (a) set the encoding type via a pulldown tab (to baseline, main or high profile for H.264, or main profile for H.265), (b) set output video resolution via pulldown tab (to “Same as Input”, or from 176x144 to 3840x2160), (c) set the bitrate (from 32Kbps to 40Mbps), (d) set the FPS - frames per second (from 5 to 60fps), (e) set the GOP – Group of Pictures (from 5 to 300), (f) set the encoding method (VBR – variable, or CBR – continuous bitrate), (g) set the URL addresses for the supported communication protocols,



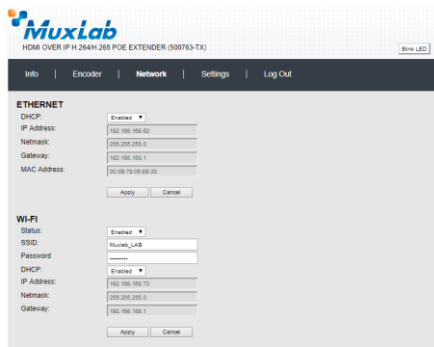
2321 Rue Cohen, Montreal, Quebec, Canada. H4R 2N7
Tel: (514) 905-0588 Fax: (514) 905-0589
Toll Free (North America): (877) 689-5228
E-mail: info@muxlab.com URL: www.muxlab.com

including TS, HLS, FLV (along with HTTP Port# setting), RTSP (along with Port# setting and Push or Pull mode selection via pulldown tab), RTMP (along with Port# setting and Push or Pull mode selection via pulldown tab), and Multicast IP (along with Port# selection), (h) enable or disable each of these communication protocols from a pulldown tab, **Note:** Only a limited selections should be made at a time. Do not enable all at the same time. (i) set the embedded audio input source (to HDMI, or Analog via 3.5mm jack) (j) set the audio bitrate (from 48Kbps to 320Kbps) (k) set the audio codec (to AAC, or MP3), (l) set the audio frequency (to 44100Hz, or 48000Hz), and (m) enable or disable the Dip Switches via a pulldown tab. Click on the “Apply” button to accept changes, or on “Reset” to return to the previous settings.

Network Tab

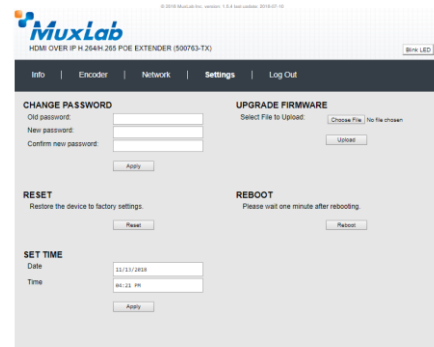
Click on the Network tab to (a) enable or disable DHCP via a pulldown tab, (b) set the device Static IP Address, Subnet Mask and Gateway, and (c) to get the unit MAC address.

Click on the “Apply” button to accept changes, or “Reset” to return to the previous settings.



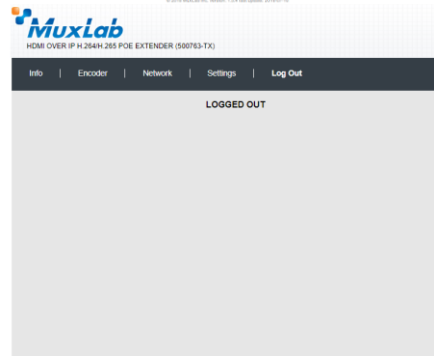
Settings Tab

Click on the “Settings” tab to (a) change the login password, by entering the old password, new password, and reconfirming the new password, and clicking on “Apply”, (b) upgrade the device firmware, by clicking on the “Choose File” button to search for and select the new firmware, and then clicking “Upload”, (c) reset the unit to factory defaults, by clicking on the “Reset” button, and (d) reboot the unit, by clicking on the “Reboot” button.



Log Out Tab

Click on the “Log Out” tab to log out of the device web interface.

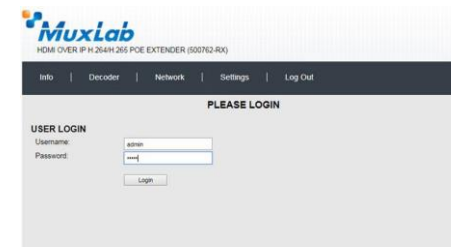


2) Configuring 500762-RX

The 500762-RX is fully compatible with the 500763-TX. You may also want to reference the 500762-RX web interface manual directly. After entering the 500762 IP address in the browser the login screen will be displayed.

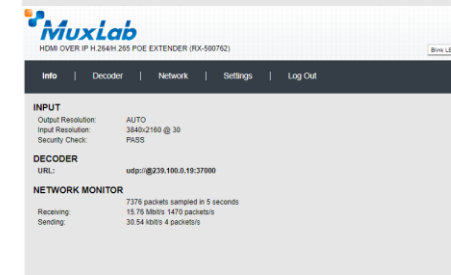
Login

To login to the 500762-RX web interface, type in the Username and Password, and then click on “Login”. The default Username and Password is “admin”.



Info Tab

Click on the “Info” tab to get information on the 500762-RX, such as the output and input video resolution, and the URL addresses for the supported & configured communication protocols, including TS, HLS, FLV, RTSP, RTMP, and Multicast.



Decoder Tab

Click on the “Decoder” tab to (a) set the output video resolution via a pulldown tab (to Auto, or from 480/60 to 3840x2160), (b) set the URL addresses for the supported communication protocols, including TS, HLS, FLV, RTSP, RTMP, and Multicast, (c) enable or disable each communication protocol from a pulldown tab, (d) set Deep Color, and (f) enable or disable the Dip Switches via a pulldown tab.

Click on the “Apply” button to accept changes, or on “Reset” to return to the previous settings.



Network Tab

Click on the Network tab to (a) enable or disable DHCP via a pulldown tab, (b) set the device Static IP Address, Subnet Mask, Gateway, DNS 1 and DNS 2, and (c) to get the unit MAC address.

Click on the “Apply” button to accept changes, or “Reset” to return to the previous settings.

