

Overview:

The HDMI 8x8 Matrix Switch, HDBT, 4K/60 allows up to eight (8) different HDMI sources to be connected and/or distributed to up to eight (8) + two (2) HDMI displays. The unit supports eight (8) HDBT outputs, plus the first two (2) outputs also include two (2) HDMI outputs for local connectivity. The HDMI 8x8 Matrix Switch, HDBT, 4K/60 is compatible with the MuxLab 500454-PoE-RX HDBT Receivers, and supports distances up to 70m at 1080p and 40m at 4K via Cat5e/6 cable. Management functions include front panel pushbutton, IR, RS232 and IP. The unit supports software updates in order to remain current.

Applications:

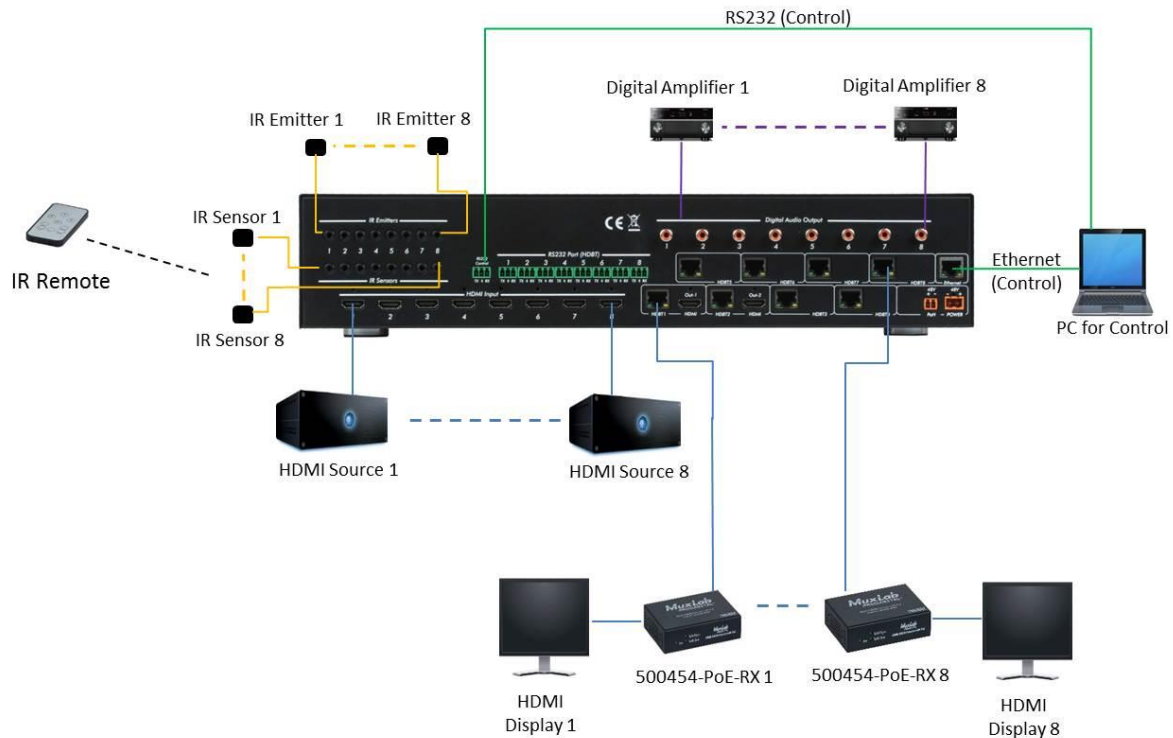
- Commercial and residential AV systems
- Classroom training systems
- Digital signage
- Boardroom systems
- Collaborative PC systems
- Medical information systems



Key Features:

- 8x8 Matrix supporting 8 HDMI inputs, 8 HDBT outputs and two of the outputs also support 2 HDMI outputs.
- Supports HDMI 2.0 (4K/60 4:2:0) & HDCP 2.2
- Compatible with 500454-PoE-RX HDBT PoE Receiver
- HDBT outputs support distances up to 70m at 1080p and 40m at 4K
- Supports PoH to power HDBT Receivers
- Supports 8 audio out channels of 2CH, 5.1 Dolby, and DTS
- Supports an independent IR matrix to manage end devices
- Powerful EDID management
- Controllable via front panel, RS232, IR and TCP/IP
- Built-in GUI web interface

Typical Application





Specifications	
Environment	HDMI 2.0
Devices	Ultra HD Blu-Ray, media players/streamers, projectors, monitors, TV, PC, laptops.
Transmission	Transparent to the user.
Video Bandwidth	10.2Gbps (HDBT), 594Gbps (HDMI)
Maximum Pixel Clock	297MHz (HDBT), 594MHz (HDMI)
Signals and video resolution	HDMI 2.0 (4K/60 4:4:4 for HDMI outputs & 4K/60 4:2:0 for HDBT outputs) and HDCP 1.4 & 2.2
Connectors	Ten (10) HDMI connectors, including eight (8) inputs and two (2) outputs Nine (9) RJ45 shielded connectors, including eight (8) for HDBT Out, and one (1) for Ethernet unit management Sixteen (16) 3.5mm Jacks; for eight (8) IR Sensor & eight (8) IR Emitters to manage end devices Nine (9) 3-pin phoenix connectors, including eight (8) for RS232 to control end devices, and one (1) RS232 for unit management Eight (8) RCA connectors for digital Audio Output (2CH LPCM, 5.1 Dolby and DTS) One (1) 2-pin phoenix connector for PoH 48VDC power supply One (1) 2-pin power connector for unit 48VDC power supply
Audio	Digital Audio: PCM, Dolby TrueHD, DTS-HD Master Audio
Cable	HDMI cable of appropriate length for video resolution selected Cat 5e/6 or better twisted pair cable required
Maximum Distance Based on a maximum length of 6.6ft. (2m) of HDMI cable per end. Cables not included.	Cat 5e/6: Up to 230ft (70 m) @ 1080p Up to 131ft (40m) @ 4K/30 (4:4:4), or 4K/60 (4:2:0) (also supports 4K/60 4:4:4 on the two HDMI outputs for local connectivity) <i>Note: When installed in an electrically noisy environment, an STP cable must be used. Also, cross-connections reduce the effective distance depending on the twisted pair cable used.</i>
Compatible Receiver	500454-PoE-RX
Power Supply	Two (2) 110-240VAC to 48VDC power supplies
Temperature	Operating: 0° to 40°C Storage: -20° to 80°C Humidity: Up to 90% non-condensing
Enclosure	Metal enclosure
Bracket	Includes rack and wall mount bracket
Dimensions	500413 Matrix Switch: 17.5" x 3.7" x 9" (444.5mm x 94mm x 229mm)
Shipping Weight	13.8 lbs (6.25 kg)
Compliance	Regulatory: FCC, CE, RoHS
Warranty	2 years
Order Information	500413-US HDMI 8x8 Matrix Switch, HDBT, 4K/60, US (UPC: 627699014134) 500413-UK HDMI 8x8 Matrix Switch, HDBT, 4K/60, UK (UPC: 627699914137) 500413-EU HDMI 8x8 Matrix Switch, HDBT, 4K/60, EU (UPC: 627699814130)

MuxLab Inc.

2321 Rue Cohen, Montreal, Quebec, Canada, H4R 2N7

Tel: (514) 905 0588 Fax: (514) 905 0589

Toll Free: 1 877 689-5228

E-mail: info@muxlab.com

Website: www.muxlab.com