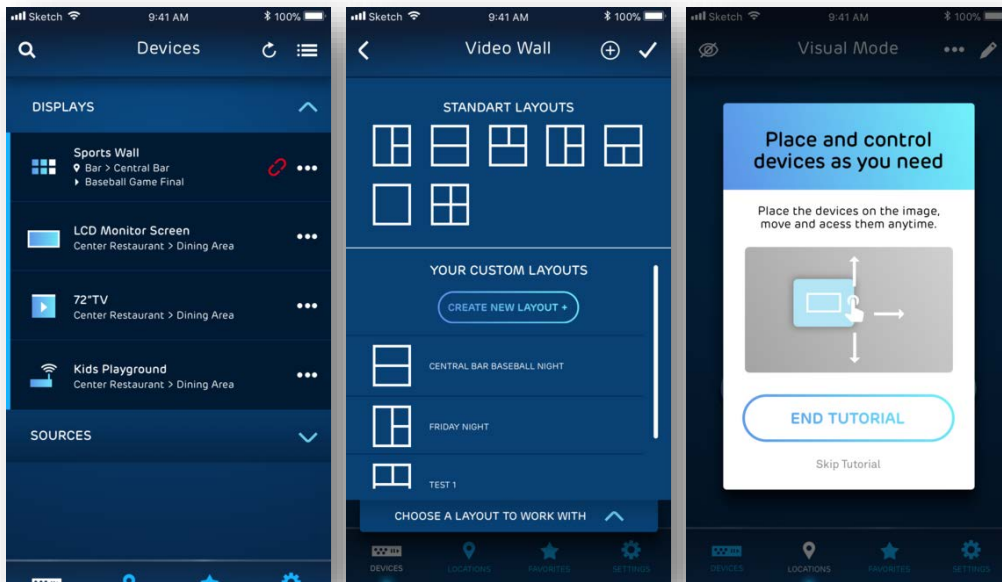


Mux_{LAB}Control



When MuxLab's AV over IP solutions are paired with the new MuxLabControl App, users can access and control the entire system connectivity using a smart tablet or phone, making video wall installations almost effortlessly easy. This new app provides multi-zone functionality, giving access to multiple locations at the palm of your hand. Users can graphically select sources, assign content to specific zones and more using simple, attractive and color-coded icons that represent all equipment in the system. Birds-eye room layouts simplify the task of identifying equipment within a zone along with so many more user friendly features.

Effortlessly Manage Connectivity of AV Sources to TVs and Video Walls.



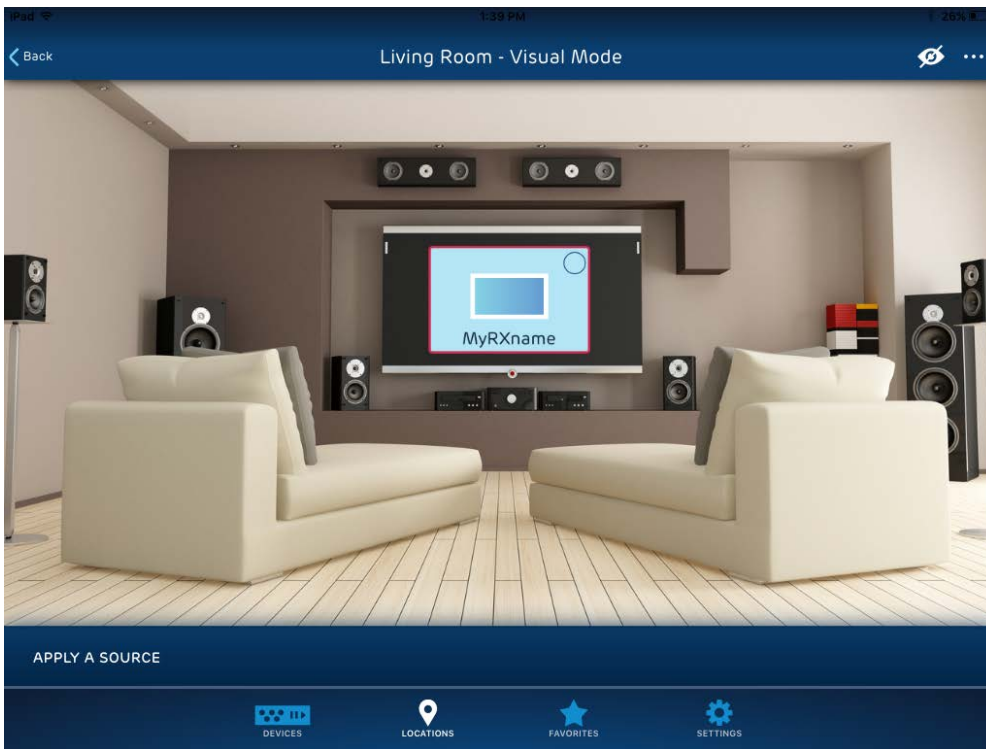
- ✓ Use on smartphones and tablets
- ✓ Intuitive for residential or large commercial applications
- ✓ Floor plan layouts
- ✓ Room layouts
- ✓ Color coded indicators for connected source and display equipment

Managing AV over IP based systems is a breeze.





MuxLab Control



Visual mode
floor plan
& room
layouts.

Ideal for residential or
commercial
applications.

