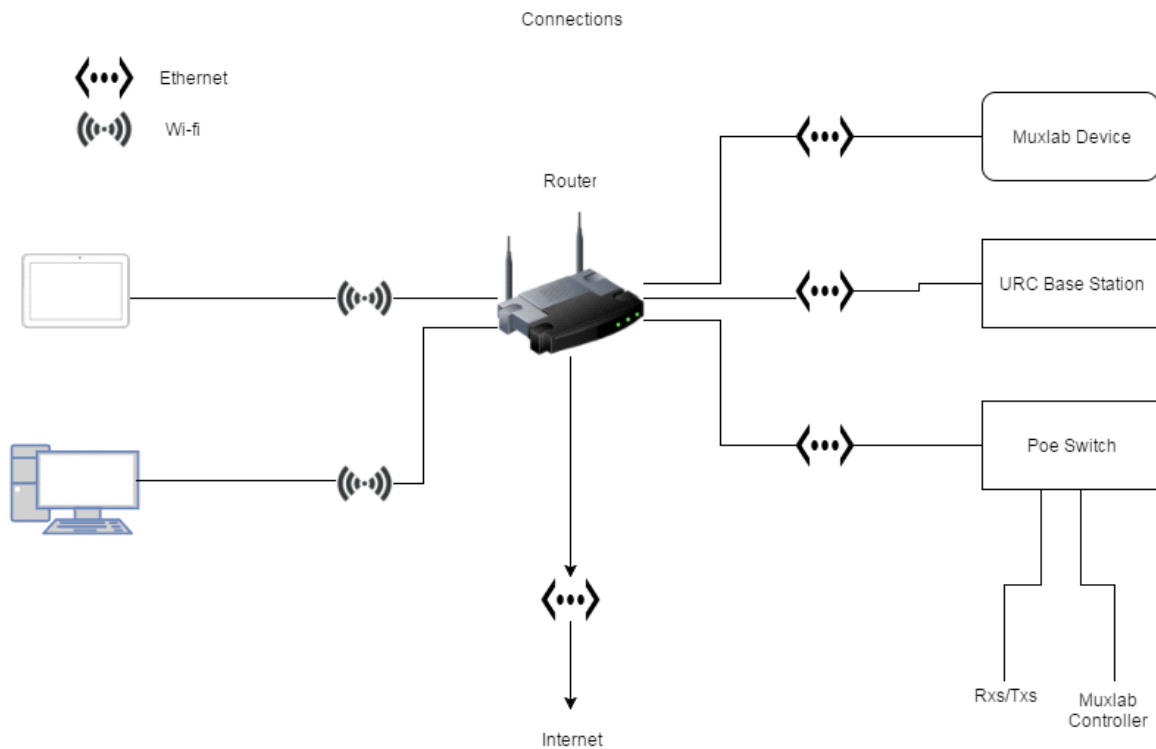


## Muxlab / URC Driver setup

This guide will take you through the necessary steps to install and setup the Muxlab URC Drivers in an Accelerator project. For this setup, the following knowledge and items are required:

- A basic understanding of the Accelerator application.
- The driver file (zip file).
- A URC base station.
- A tablet (Android or iOS).
- Knowledge of the Local Network.
- These devices must be in the same IP group (same network segment)
- The following network setup.



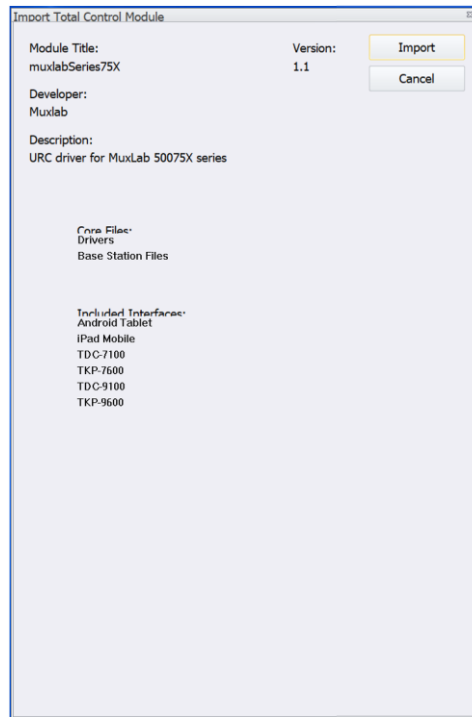
To install the drivers and setup your project, please unzip the Muxlab URC Driver file that you downloaded from the Muxlab website and follow these steps.

## Importing the .TCM2 File



*This section assumes that you already have basic experience programming with the URC Accelerator software.*

Open URC Accelerator and create a new file. Add a Tablet to the project and save. Next, click File tab, select "Import TCM Files" and open the .tcm2 file. The following screen will appear:

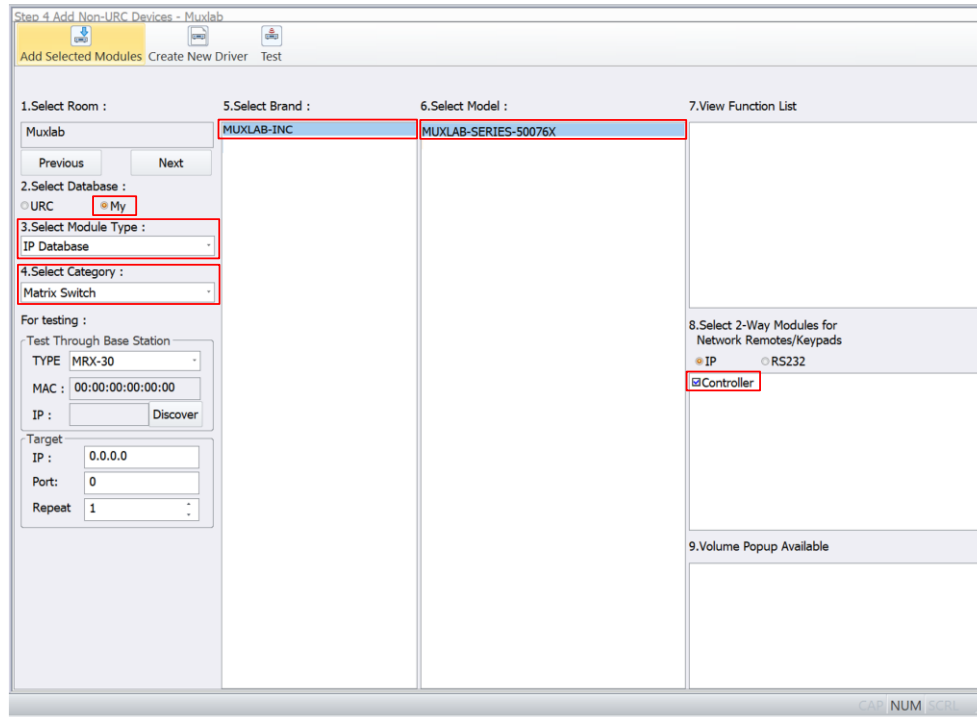


Confirm that all the information is correct and click "Import".

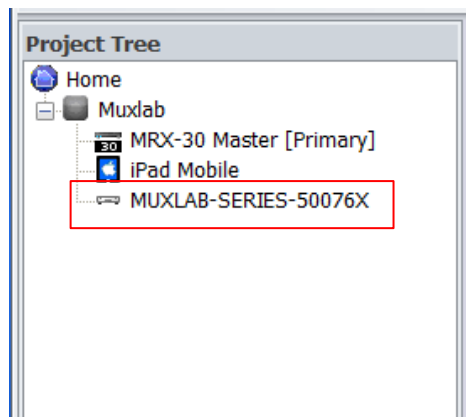
Your module has now been imported into Accelerator. All of your output files have been unzipped and placed in their appropriate directories within the Accelerator program folder.

Your driver file is now complete, and the module is ready to be used in your project.

Now, click on the "Program" tab and go to Step 4. In item 2 (Select Database), select "My". From the drop-down menu in item 3 (Select module type), choose "IP Database". In item 4 (Select category), choose "Matrix switch". In item 5 (Select brand), you should see the MUXLAB option, after selecting it, item 6 should show the model "MUXLAB-SERIES-50076X" or "MUXLAB-SERIES-50075X" depending on the case (See figure below).



Click “Add Selected Modules” to add the module to your project. You should now see the module in your Project Tree:



Go to Step 6 (Network Settings) and click on the "URC Device" option to configure the network settings of your base station. Then click "Non-URC Device", you should see the MuxLab module listed, you also need to set the IP address and port number of the Muxlab Controller (500811/12).

Next, go to Step 10 (Edit User Interfaces) and Accelerate.

Next, go to Step 11 (3<sup>rd</sup> Party 2-Way Settings). In the (Two Way Module Settings) option select the room, the device, and the module. In the network information section, you should see the IP address and the port number for the Muxlab Controller. In the (System Parameter Information) option is where you define the parameters of the Muxlab Controller:

USERNAME=admin

PASSWORD=admin

IPADDRESS=192.168.x.x

TARGETID=1

NUMRX=10 (please enter the actual number of Muxlab devices)

Note: The above entries are examples and may differ from your actual setup.

Explanation:

- **Username** and **Password** are the credentials used to log into the Muxlab Controller web interface.
- **IPAddress**: This is the IP address of the Muxlab Controller.
- **Target ID**: The Target ID represents a setup or arrangement of the MuxLab configured devices that you wish to control. More than one Target ID may exist at any given time. The Target ID may be found on the web Interface of the Muxlab controller. Make sure you select the correct Target ID to control.
- **numrx**: numrx is the highest Port ID number of the setup that is to be controlled. The Port IDs are configured on the web interface of the MuxLab Controller.

Copy the parameters above as is and adjust the parameters as needed. After that, paste the paragraph directly in the field. In doing so, the structure and syntax of the paragraph will remain intact and be valid (See figure below).

Step 11 Two Way Module Setup

Two Way Module Settings Volume Popup Settings

1. Selected Room :  
Muxlab

2. Select Device :  
MUXLAB-SERIES-50076X

3. Select Module :  
Controller

Network Information

MAC 00:00:00:00:00:00

☒ This device has been assigned a static IP

IP 192 . 168 . 168 . 50

Port 80

Module Information

Type :  
Controller

Parameter :

System Parameter Information

USERNAME=admin  
PASSWORD=admin  
IPADDRESS=192.168.168.50  
TARGETID=1  
NUMRX=10

Next, go to Step 12 (Macro Editing) click Accelerate, and then OK.

It is finally time to download. Click the “Download” button on the top banner and download the project to your base station. Once it finishes downloading and reboots itself, launch the module on your tablet device and you will be able to control the Muxlab Over IP Devices (Transmitters and Receivers).